

Windows 11

Everything you need to know

Vito Macina

Microsoft MVP - Windows and Devices for IT
vito.macina@outlook.com



macinando



vitomacina

Agenda

Windows 10

- Where we are
- Where are we going

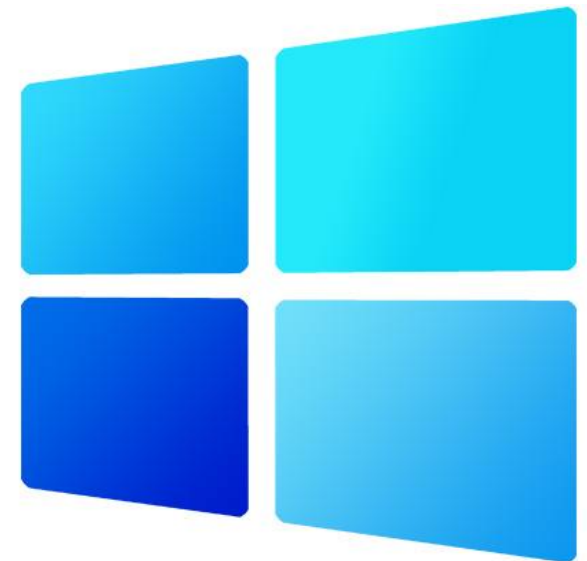
Windows 11

- Everything you need to know



Windows 10

WHERE WE ARE?



 Windows 10

November 2021 Update

November 16, 2021

Internet Explorer Retirement



*Internet Explorer 11
desktop application
retirement announced*

May 19, 2021

*Microsoft 365 and other
apps end support for
Internet Explorer 11*

August 17, 2021

*Internet Explorer 11
desktop application
is retired*

June 15, 2022

Internet Explorer 11 desktop app retirement FAQ

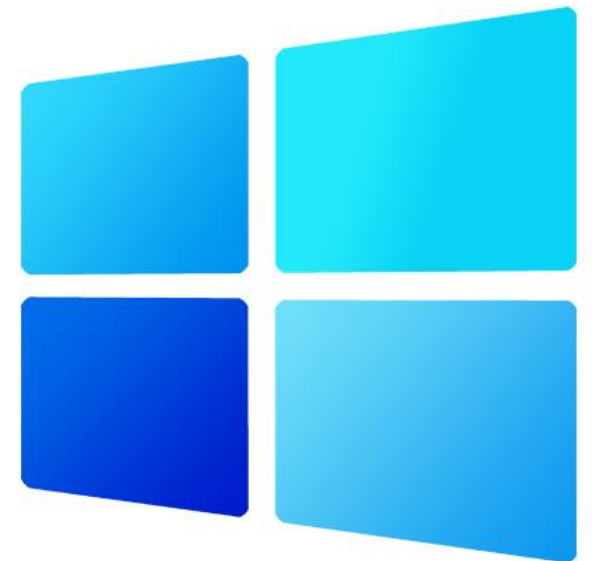
The future of Internet Explorer ("IE") on Windows 10 is in Microsoft Edge. What does this mean for commercial organizations, IT admins, developers, and end users? Microsoft Edge brings you a faster, more secure, and more modern web experience than Internet Explorer. Also, Microsoft Edge with [Internet Explorer mode](#) ("IE mode"), is the only browser with built-in compatibility for legacy IE-based sites and apps.

As announced today, [Microsoft Edge with IE mode is officially replacing the Internet Explorer 11 desktop application](#) on Windows 10. As a result, the Internet Explorer 11 desktop application will go out of support and be retired on June 15, 2022 for certain versions of Windows 10.



Windows 10

WHERE ARE WE GOING



October 14, 2025

End of Life

Windows as a Service change from 21H2

A circular icon with a light blue border and a white background, containing the text "Quality Updates" in blue.

Quality Updates

A single cumulative update each month with no new features

- Security fixes, reliability fixes, bug fixes, etc.
- Supersedes the previous month's update

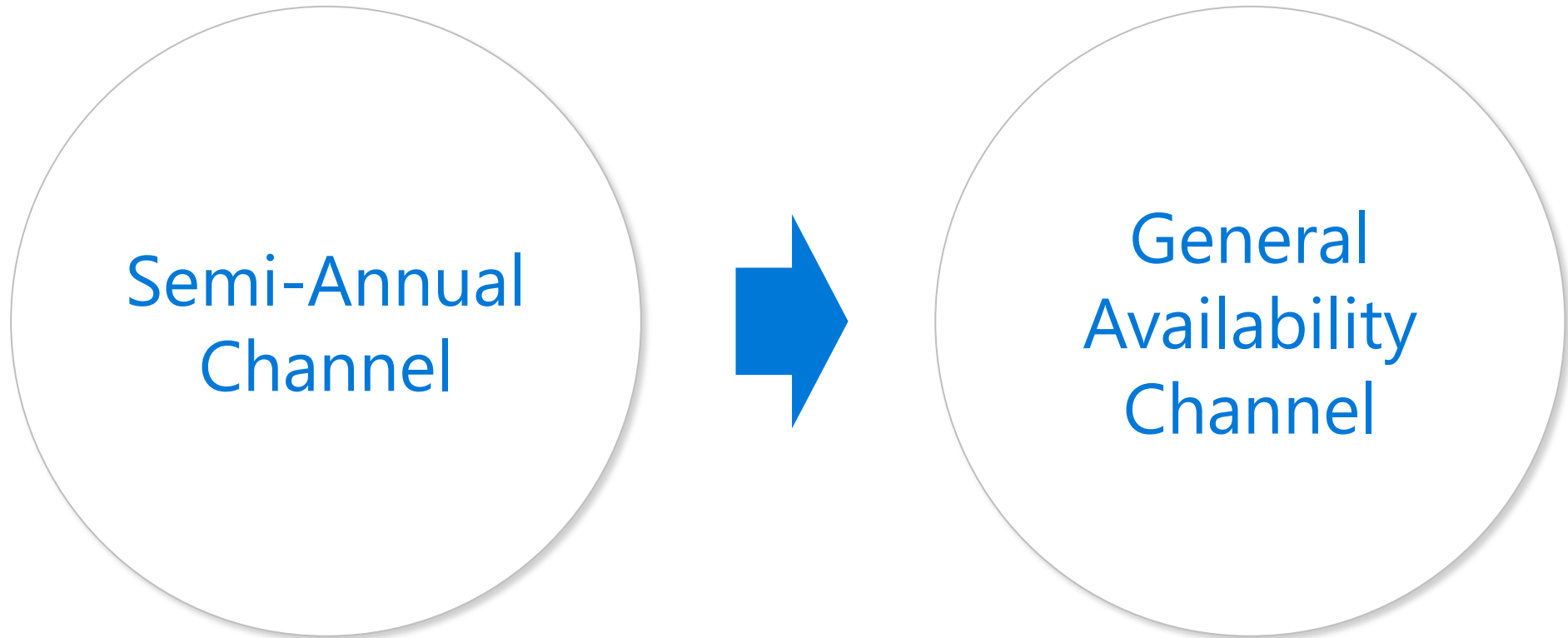
A circular icon with a light blue border and a white background, containing the text "Feature Update" in blue.

Feature Update

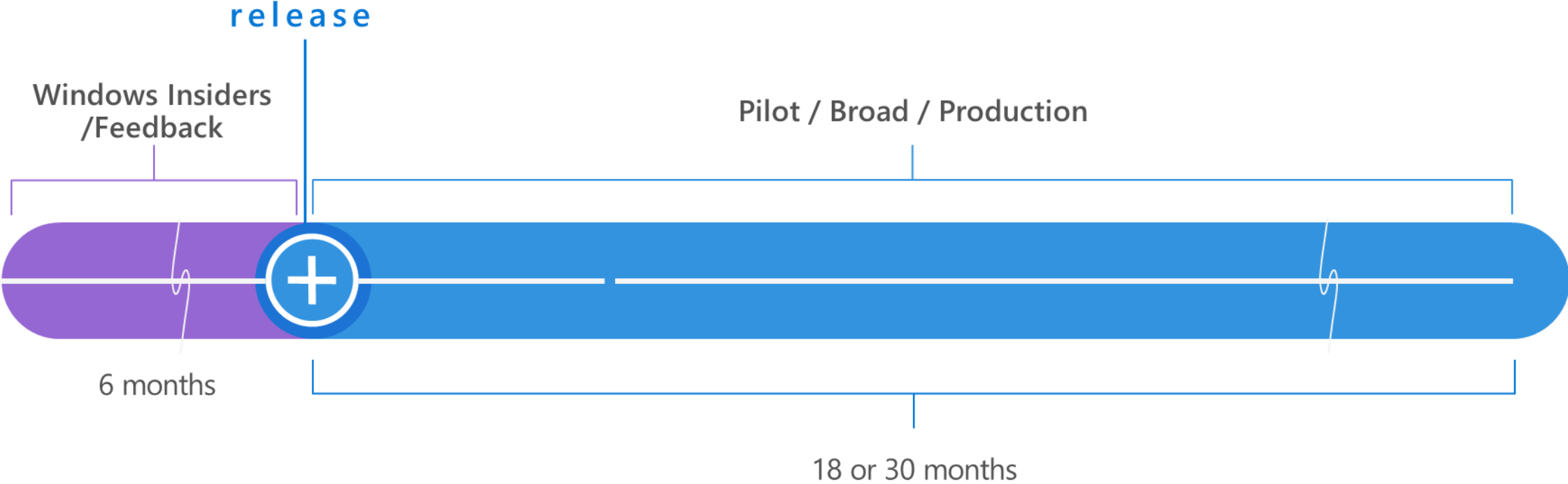
One in the second half of the year with new features

- New features and innovation APIs and security capabilities
- Very reliable, with built-in rollback capabilities
- Simple deployment using in-place upgrade, driven by existing tools

Windows as a Service change from 21H2



Windows 10 Release Lifecycle



Windows 10 release information

Edition	Released first half of year (H1)	Released second half of year (H2)
Windows 10 Enterprise Windows 10 Education Windows 10 IoT Enterprise	18 months from release date	30 months from release date
Windows 10 Pro Windows 10 Pro Education Windows 10 Pro for Workstations Windows 10 Home ¹	18 months from release date	

¹ Home edition does not support the deferral of feature updates and will therefore typically receive a new version of Windows 10 prior to the end-of-servicing date shown.

Windows 10 release information

Version	Availability date	EOS for Home, Pro, Pro Education, Pro for Workstations and IoT Core	EOS for Enterprise, Education and IoT Enterprise
Windows 10, version 21H2	November 16, 2021	June 13, 2023	June 11, 2024**
Windows 10, version 21H1	May 18, 2021	December 13, 2022	December 13, 2022
Windows 10, version 20H2	October 20, 2020	May 10, 2022	May 9, 2023**
Windows 10, version 2004	May 27, 2020	December 14, 2021	December 14, 2021
Windows 10, version 1909	November 12, 2019	End of service	May 10, 2022**

** Serviced for 30 months from release date

Windows 10 release information

Version	Availability date	Mainstream support end date	Extended support end date
Windows 10 Enterprise LTSC 2021 Windows 10 IoT Enterprise LTSC 2021	November 16, 2021	January 12, 2027	January 13, 2032 (IoT Enterprise only)
Windows 10 Enterprise LTSC 2019 Windows 10 IoT Enterprise LTSC 2019	November 13, 2018	January 9, 2024	January 9, 2029
Windows 10 Enterprise 2016 LTSC Windows 10 IoT Enterprise 2016 LTSC	August 2, 2016	October 12, 2021	October 13, 2026
Windows 10 Enterprise 2015 LTSC Windows 10 IoT Enterprise 2015 LTSC	July 29, 2015	End of service	October 14, 2025

"Right now we're releasing Windows 10, and because Windows 10 is the last version of Windows, we're all still working on Windows 10."

Jerry Nixon – Software Development Engineer – Ignite 2015



Windows

Everything you
need to know



How & where to get it

For consumers

Usual channels apply:
Intelligent rollout process!

For IT administrators

Available through the same, familiar channels we utilize today for Windows 10 feature updates.

Use your existing deployment and management tools.

Running Pro, Enterprise and Education editions of Windows 10?
Same control over when and how to roll out the upgrade.

Kick the tires:

[Windows Insider Program for Business](#)

When to get it

Offered as an upgrade to eligible devices running Windows 10 over this and next year.

Available on new eligible devices.

Windows 11

Hardware requirements

To install or upgrade to Windows 11, devices must meet a set of minimum hardware requirements

- **Processor** 1 gigahertz (GHz) or faster with two or more cores on a [compatible 64-bit processor](#) or system on a chip (SoC)
- **RAM** 4GBs or greater
- **Storage space** 64GBs or larger
- **Graphics card** Compatible with DirectX 12 or later with WDDM 2.0 driver
- **System firmware** UEFI, Secure Boot capable
- **TPM** Trusted Platform Module (TPM) version 2.0
- **Display** High definition (720p) display, 9" or greater, 8 bits per color channel
- **Internet connection** Internet access is required to perform updates and to download and take advantage of some features. Windows 11 Home edition requires internet connectivity and a Microsoft Account to complete device setup on first use.
- **Note** S mode is only supported on Home Edition on Windows 11. If you are running a different edition of Windows in S mode, you will need to first [switch out of S mode](#) prior to upgrading. Switching a device out of Windows 10 in S mode also requires internet connectivity.

Learn more: <https://docs.microsoft.com/windows/whats-new/windows-11-requirements>



Designed for hybrid work



Productive

Improve productivity and focus with a simple, powerful user experience.



Collaborative

A smarter way to collaborate with Microsoft Teams integration¹.



Secure

Ready for Zero Trust, to protect data and secure access, anywhere.



Consistent

Provision and manage Windows 11 as if it is Windows 10.

¹ Coming in a future release; appearance may vary.

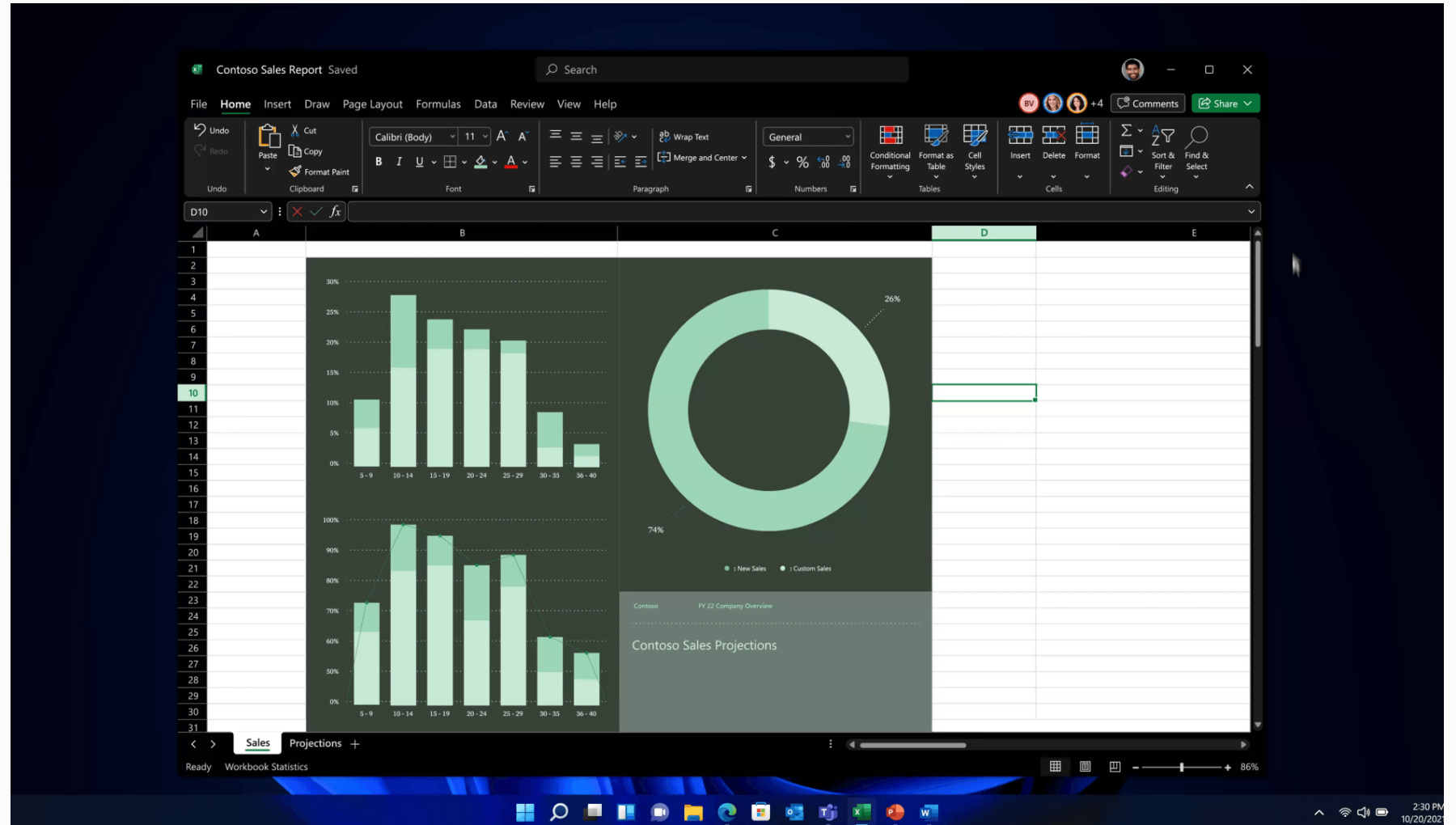
Productive with simple,
modern visuals



Windows works **the way**
you want

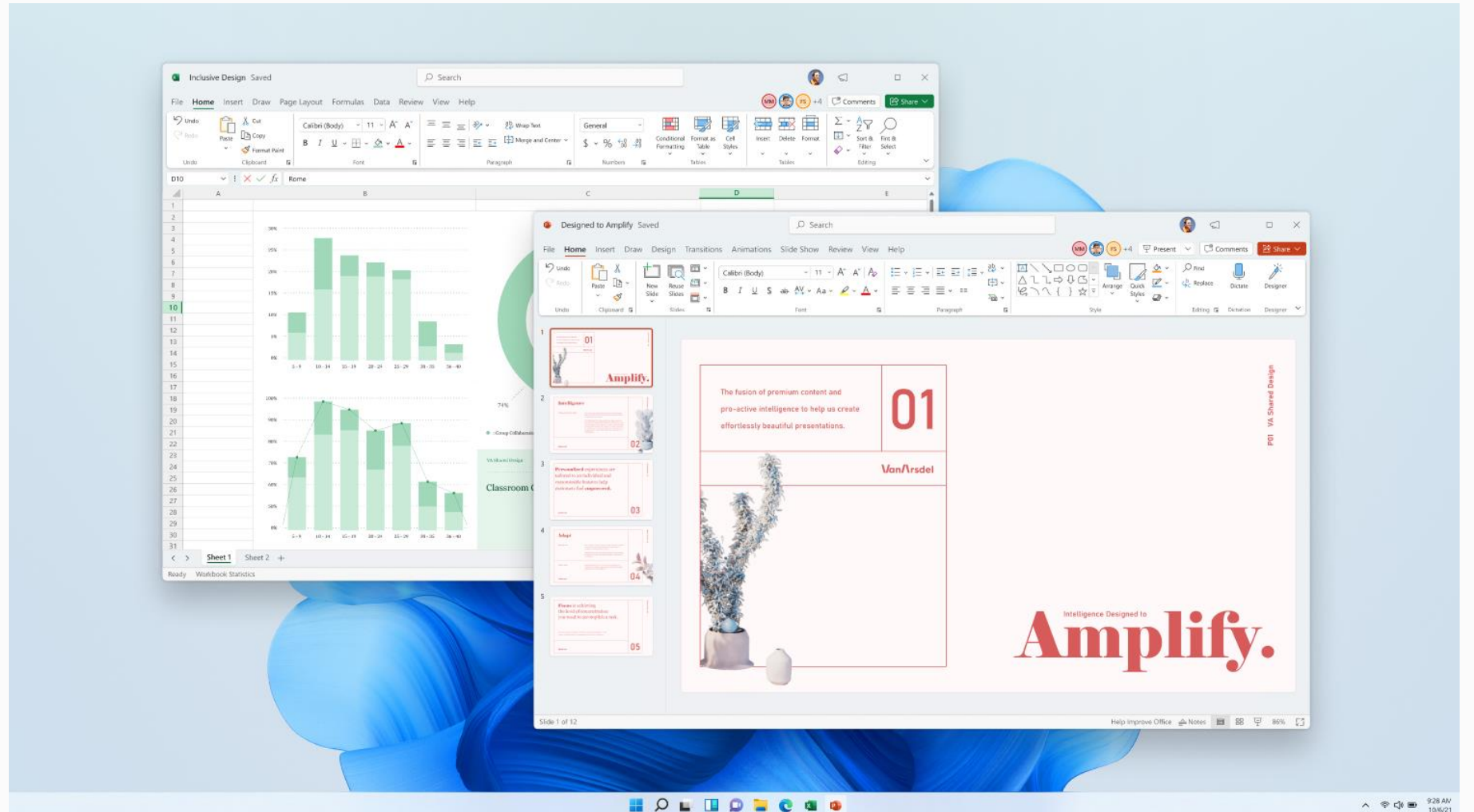


Productive with Snap assist



Productive with Office

The visual refresh of Office shines on the new Windows 11



Collaborate

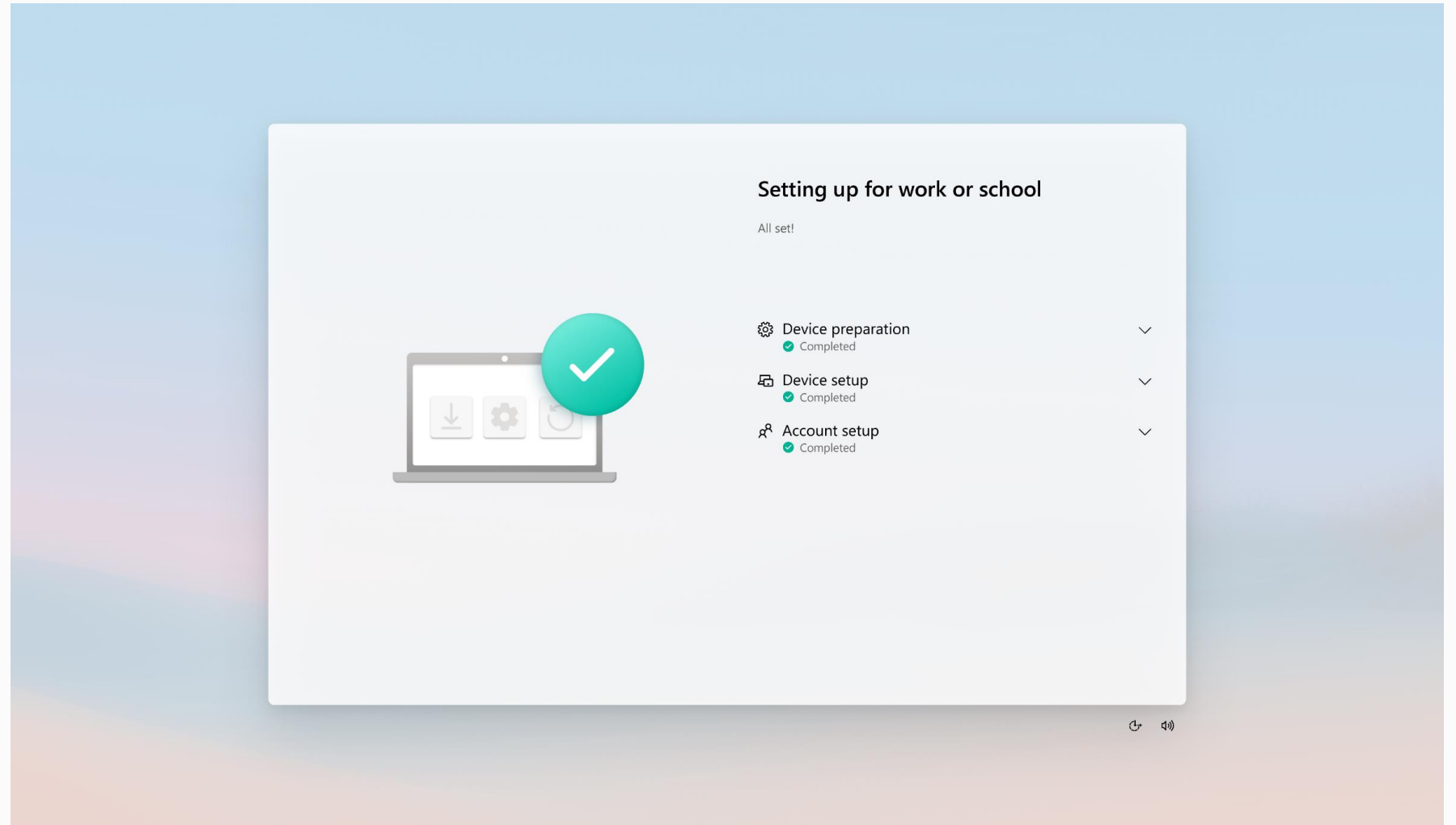


Coming in a future release; appearance may vary.

Features require a Microsoft 365 subscription service that includes Microsoft Teams. API open to other collaboration tools.

Company PCs for remote workers

Autopilot, the hybrid work deployment process



Some features require a Microsoft 365 subscription service

Forget passwords, go passwordless.

Convenient, secure, single sign-on from device to the cloud.

Windows Hello



Microsoft Authenticator



FIDO2 Security Keys



Passwordless momentum

200M+

Active passwordless users

A process you know

Plan

Collect data and generate insights to plan the path forward.

Prepare

Setup targeted users on Windows Insiders for Business

Bring in new Windows 11 ready devices.

Deploy

Deploy Windows 11 devices alongside Windows 10 devices.



Windows 11 release information

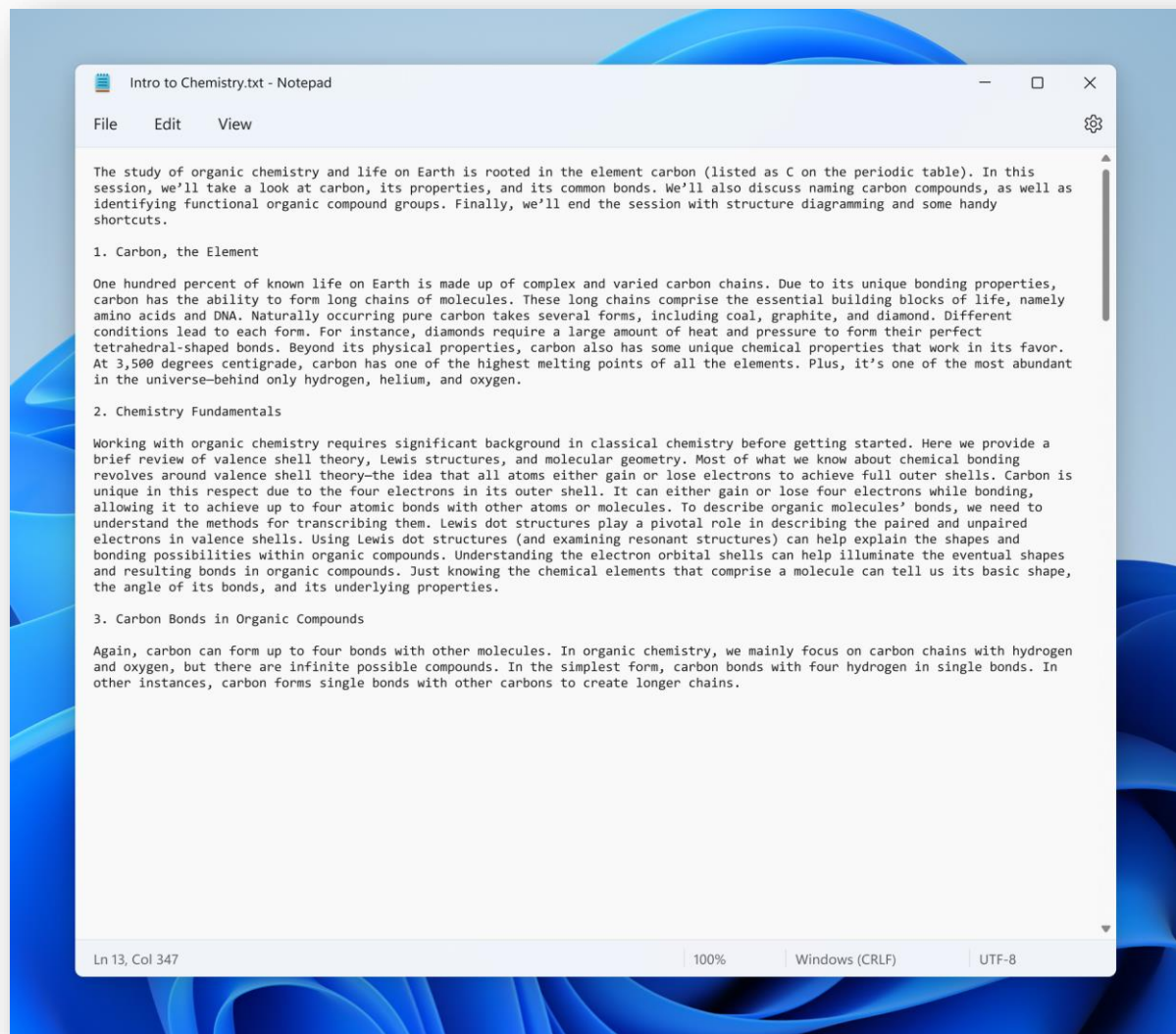
Edition	Servicing timeline (one release per year)
Windows 11 Enterprise Windows 11 Education Windows 11 IoT Enterprise	36 months from release date
Windows 11 Pro Windows 11 Pro Education Windows 11 Pro for Workstations Windows 11 Home ¹	24 months from release date

¹Home edition does not support the deferral of feature updates and will therefore typically receive a new version of Windows 11 prior to the end-of-servicing date shown.

Windows 11 release information

Version	Availability date	EOS for Home, Pro, Pro Education, Pro for Workstations	EOS for Enterprise, Education and IoT Enterprise
Windows 11, version 21H2	October 4, 2021	October 10, 2023	October 8, 2024

One piece at a time



To be explored



Thank you!

 Windows 11

Vito Macina

Microsoft MVP - Windows and Devices for IT
vito.macina@outlook.com



macinando



vitomacina